

Research Article

The Effect of Early Mild Permissive Hyperlactatemia Strategy on Patients with Acute Intracranial Hypertension Induced by Spontaneous Intracerebral Hemorrhage

Chen Sheng-long¹, Wang Zhong-hua², Liu Xin-qiang¹, Yang Ren-qiang¹, Zeng Hong-ke¹, Chai Yun-fei^{3*}

¹Department of Critical Care Medicine, Guangdong Provincial People's Hospital, Guangdong Academy of Medical Sciences, Guangzhou, Guangdong, P. R. China

²Department of gerontological critical care medicine, Guangdong Provincial People's Hospital/Guangdong Academy of Medical Sciences/Guangdong Provincial Geriatrics Institute, Guangzhou, Guangdong, China

³Anesthesiology Department of Guangdong Cardiovascular Institute, Guangdong Provincial People's Hospital, Guangdong Academy of Medical Sciences, Guangzhou, Guangdong, P. R. China

***Corresponding Authors:** Chai Yun-fei, Anesthesiology Department of Guangdong Cardiovascular Institute, Guangdong Provincial People's Hospital, Guangdong Academy of Medical Sciences, Guangzhou, 510080, Guangdong, P. R. China, E-mail: wochaiyunfei@163.com

Received: 27 September 2019; **Accepted:** 14 October 2019; **Published:** 21 October 2019

Citation: Chen Sheng-long, Wang Zhong-hua, Liu Xin-qiang, Yang Ren-qiang, Zeng Hong-ke, Chai Yun-fei. The Effect of Early Mild Permissive Hyperlactatemia Strategy on Patients with Acute Intracranial Hypertension Induced by Spontaneous Intracerebral Hemorrhage. Journal of Surgery and Research 2 (2019): 249-257.

Abstract

Background: Dehydrating therapy to relieve brain edema is one of main methods to treat acute intracranial hypertension (ICH) after spontaneous cerebral hemorrhage. However, little is known regarding how much the negative fluid balance should be and indications of optimal fluid status. This study was to investigate whether mild permissive hyperlactatemia

within initial 3-day is an available indicator guiding fluid management in patients with acute ICH.

Methods: Adult patients of spontaneous cerebral hemorrhage with ICH admitted to the ICU and receiving dehydrating agents were retrospectively analyzed. The daily serum lactate concentration was collected over the

first 3 days after admission. According to level of serum lactate, patients were divided into three groups (Normal-lactate group: <2 mmol/L, Mild-lactate group: 2-3.5 mmol/L, High-lactate group: >3.5 mmol/L respectively). And the main endpoint of this study was the 30-day mortality following ICU admission.

Results: The mortality rate at 30 days in the high-lactate group patients was significantly higher than that in the other two groups (normal-group and mild-lactate group), (26.4% vs (16.5% and 10.9%), $P < 0.01$). Furthermore, compared with the normal-lactate group, the 30-day mortality rate was significantly lower (10.9% vs 16.5%, $P < 0.01$), the Glasgow Coma (GCS) Score at 7-day was better (10.8 ± 3.8 vs 8.3 ± 2.4 , $P = 0.021$), and the length of ICU stay was shorter (14.2 ± 7.3 vs 16.7 ± 8.6 d, $P = 0.015$) in the mild-lactate group.

Conclusions: In this retrospective cohort, mild permissive hyperlactatemia (2-3.5 mmol/L) over the first 3 days as a reference range that can be used to optimize fluid management in patients with ICH who accept dehydrating therapy.

Keywords: Intracerebral Hemorrhage; Intracranial Hypertension; Hyperlactatemia

1. Introduction

Acute intracranial hypertension is a life-threatening complication in patients with spontaneous intracerebral hemorrhage [1]. One of the main methods to treat acute intracranial hypertension (ICH) is dehydrating therapy, a method that actually reduces blood volume appropriately and maintains minimum fluid status to decrease intracranial pressure as much as possible [1, 2]. However, little is known about how much the negative fluid balance should be and the indicators for optimizing fluid management of ICH treatment. Lactate, a substrate of carbohydrate metabolism, is formed from pyruvate in

the glycolysis pathway [3]. When the oxygen supply is scarce or interrupted, anaerobic metabolism predominates and serum lactate levels rise [4]. Elevation of serum lactate has been considered to be strong indicator of hypovolemia [5]. However, recent studies have shown that hyperlactatemia appeared in 40%-62% patients after neurosurgery, but didn't correlate to systemic hypoperfusion in craniotomy patients [6]. Of those patients, elevated lactate was not associated with systemic complications such as myocardial infarction or mortality. Higher metabolic rate and oxygen demand of the brain may be explained for elevation of serum lactate in patients with spontaneous intracerebral hemorrhage [6]. Moreover, recent evidence suggests that the neurons may utilize lactate as an energy substrate [7]. Thus, we believe that the mild elevation of serum lactate is reasonable and beneficial for the patients with ICH who undergoing dehydration treatment. Our hypothesis is that early permissive mild elevation of serum lactate in those patients receiving dehydrating therapy could be a guiding goal to optimize fluid management.

2. Methods

2.1 Study design

We performed a retrospective cohort analysis of consecutive patients admitted to the Department of Critical Care Medicine, Guangdong Provincial People's Hospital, Guangdong Academy of Medical Sciences, P.R. China, between January 2016 and July 2019. The study protocol was approved by the Institute ethics committee and informed consent was waived as stated by the application. Exclusion criteria were: age below 18, Comorbid conditions included preexisting liver disease, heart failure, kidney disease, and sepsis. Clinical and laboratory data at ICU were extracted, including age, sex, Acute Physiology and Chronic Health Evaluation (APACHE II) score, Glasgow Coma Score (GCS), pre-existing diseases, arterial pH, PaO₂,

creatinine, total bilirubin and lactate values. In addition, data of treatment during the initial 3 days of ICU stay were obtained, including types of dehydrating agent (including albumin), fluid balance (input and output), decompressive craniectomy and mechanical ventilation. We also collected the length of ICU stay and 30-day mortality. All the patients were divided into three groups (normal-lactate group: <2 mmol/L, mild-lactate group: 2-3.5 mmol/L, high-lactate group: >3.5 mmol/L respectively) according to the daily serum lactate level over the first 3-day after admission.

2.2 Statistical analysis

Data are the mean \pm standard deviation, percentages, or medians (interquartile range). The unpaired t-test or Mann-Whitney test was used for unpaired comparisons as appropriate. The Fisher's exact or chi-square test was used to examine differences between categorical variables. The cumulative incidence of 30-day mortality was estimated according to the Kaplan-Meier method, and the log-rank statistic was used for comparisons. The Cox proportional hazards regression model was used to determine which variables were related significantly to death during the follow-up. All statistical data were analysed by licensed IBM SPSS Statistics version 24 for Windows (SPSS Inc, Chicago, IL, USA).

3. Results

3.1 Cohort description

Figure 1 demonstrates how cases were selected. A total of 390 patients were identified using the screening criteria. There were 41 patients death over the first 3-day after admission. Patients with sepsis (n=11), cirrhosis (n=6), hepatitis (n=12), end stage renal disease (ESRD) or chronic kidney disease (CKD) (n=34), missing documentation (n=6), no lactate labs drawn (n=4) were excluded, and final 273 patients were analyzed. Table 1 shows the baseline characteristics of the three group patients. Although there was no

significant difference of the fluid balance among the three groups, the amount of daily fluid input in the Mild-lactate group was the least ($P<0.01$), and the Normal-lactate and High-lactate group was similar. The serum lactate, creatinine, APACHE II score, GCS score, and types of dehydrating agents at admission among the three group patients were not significant differences.

3.2 Outcomes in patients with different goals of daily serum lactate level over the first 3-day

Table 2 compares clinical outcomes in the three groups with different goals of daily serum lactate level over the first 3-day. The total 30-day mortality rate of this cohort study was 17.4% (48/273). Compared with the High-lactate group patients, the 30-day mortality of patients in both Normal-lactate and Mild-lactate groups were significantly lower (26.4% vs (16.5% and 10.9%), $P<0.01$). Similar results of the length of ICU stay were shown among the three group patients (19.8 ± 9.1 vs (16.7 ± 8.6 and 14.2 ± 7.3), $P=0.015$). Moreover, the 30-day mortality in Mild-lactate group was further decreased when compared with the Normal-lactate group patients (10.9% vs 16.5%, $P<0.01$). Similar results of the length of ICU stay among patients in the Normal-lactate group, Mild-lactate group, and High-lactate group were displayed respectively (16.9 ± 10.6 , 16.7 ± 8.6 , and 4.2 ± 7.3 , $P=0.015$). The improvement of GCS score at day-7 was the highest in the Mild-lactate group (Mild-lactate: 10.8 ± 3.8 , Normal-lactate: 8.3 ± 2.4 , High-lactate: 6.6 ± 3.6 , $P=0.021$).

3.3 Predictors associated with 30-day mortality

In the univariate Cox hazard analysis of 30-day mortality, age ($p=0.032$), decompressive craniectomy ($P<0.001$), serum Na^+ level ($P=0.011$), mechanical ventilation ($P<0.001$), serum lactate ($P<0.001$), APACHE II score ($P=0.002$), GCS score ($P=0.001$), daily positive fluid balance ($P<0.001$), were found to be significant factors. The multivariate Cox hazard analysis

of these factors revealed that decompressive craniectomy (hazard ratio (HR)=0.866, 95% confidence interval (CI) 0.236-2.300, P<0.001), serum Na⁺ level (HR=3.55, 95%CI 2.161-7.910, P=0.011), serum lactate (HR=2.866, 95%CI 1.382-10.227, P<0.001), APACHE II score (HR=4.266, 95%CI 3.161-15.910, P=0.002), GCS score (HR=4.34, 95%CI 2.019-12.981, P=0.001), and daily positive fluid balance (HR=6.886, 95%CI 3.161-16.910, P<0.001) were significant predictive factors for the occurrence of 30-day death.

death in the Normal-lactate, Mild-lactate and High-lactate group, respectively during 30-day after admission. Of those deaths, 8 (53.3%) patients in Normal-lactate group, 3 (30%) patients in the Mild-lactate group and 13 (56.5%) in the High-lactate group were focused within the first 9 days. Kaplan-Meier analysis indicated that the 30-day survival rates were significantly lower in patients in the Mild-lactate group than in those in both Normal-lactate and High-lactate groups (P=0.010, log-rank test).

3.4 Kaplan-Meier survival analysis

Figure 2 shows that there were 15, 10 and 15 patients

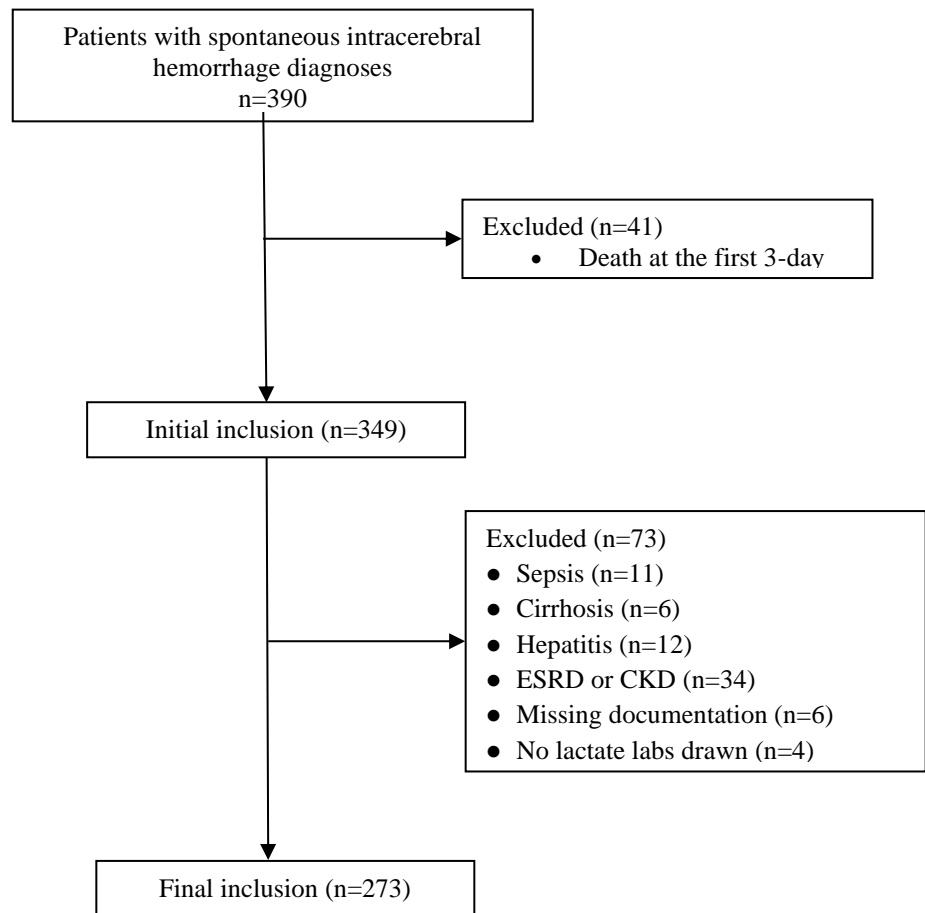


Figure 1: Retrospective case selection. ESRD indicates endstage renal disease; CKD-chronic kidney disease.

Variable	All patients N=276	Normal-lactate ^a n=91	Mild-lactate ^a n=98	High-lactate ^a group n=87	P value ^b
Age (y)	53.9 ± 10.6	53.8 ± 11.7	54.8 ± 12.1	52.9 ± 10.7	0.23
Female sex, n (%)	135 (48.9)	45 (49.4)	47 (47.9)	43 (49.4)	0.21
APACHEII score	23.7 ± 10.9	22.6 ± 8.9	24.6 ± 9.7	23.9 ± 9.5	0.19
GCS score	6.9 ± 3.1	7.1 ± 2.9	6.8 ± 2.4	6.9 ± 2.6	0.09
Diabetes, n (%)	68 (24.6)	26 (28.6)	19 (19.4)	23 (26.4)	0.02
Hypertension, n (%)	120 (43.4)	39 (42.8)	42 (42.8)	39 (44.8)	0.06
Initial MAP, mmHg,	179.1 ± 43.7	178.6 ± 42.9	180.6 ± 33.7	176.6 ± 38.9	0.42
Mechanical ventilation, n (%)	164 (59.4)	56 (61.5)	59 (60.2)	49 (56.32)	0.04
decompressive craniectomy n (%)	71 (25.1)	23 (25.3)	26 (26.5)	22 (25.3)	0.91
Baseline laboratory values					
Arterial pH	7.40 ± 2.4	7.39 ± 2.1	7.37 ± 2.1	7.41 ± 1.8	0.52
PaO ₂ /FiO ₂	309.3 ± 64.2	298.9 ± 54.1	321.2 ± 59.9	309.4 ± 60.1	0.39
Serum Na ⁺ , (mmol/l)	142 ± 29.3	139.2 ± 24.1	140.3 ± 27.2	147.6 ± 25.9	0.01
Haemoglobin, g/L	107.7 ± 26.9	110.6 ± 22.3	109.6 ± 21.9	102.6 ± 23.6	0.23
Creatinine, µmol/L	100.6 ± 39.9	98.9 ± 29.3	101.6 ± 30.9	103.6 ± 32.4	0.65
Total bilirubin, µmol/L	20.3 ± 10.4	20.1 ± 9.3	19.1 ± 8.4	22.1 ± 9.8	0.78
Lactate, mmol/L	1.8 (0.8-4.0)	1.9 (1.1-3.5)	2.0 (0.9-3.6)	2.1 (1.0-3.9)	0.76
Fluid data over the first 3-day, L					
daily fluid input	3.6 (2.0-7.6)	3.9 (2.1-5.6)	2.9 (2.0-4.2)	4.1 (3.0-6.2)	<0.01
daily fluid output	4.2 (2.9-7.8)	4.1 (2.3-5.9)	3.5 (2.3-5.2)	4.9 (3.1-6.1)	<0.01
Dehydrating agent					
Albumin use, n (%)	100 (36.2)	31 (34.1)	35 (35.7)	34 (39.1)	0.07
Mannitol use, n (%)	240 (87.9)	80 (87.9)	84 (85.7)	76 (87.3)	0.87
Hypertonic saline, n (%)	36 (13.1)	12 (13.2)	14 (12.3)	10 (11.5)	0.91
Furosemide, n (%)	103 (37.7)	34 (37.4)	36 (36.7)	33 (37.9)	0.02

Continuous variables were expressed as mean ± SD or median (25th percentile-75th percentile). Categorical variables were expressed as n (%). APACHE II, acute physiology and chronic health evaluation II score; GCS, Glasgow Coma Score. ^aNormal-lactate group was defined as daily serum lactate level <2 mmol/l within 3 days after admission, and Mild-lactate group was 2-3.5 mmol/l and High-lactate group was >3.5mmol/l respectively.) according to the serum lactate level after admission. ^bP for global comparisons among groups by Kruskal-Wallis and chi-squared tests for continuous and categorical variables, respectively.

Table 1: Characteristics of Patient Cohort, Grouped by Different Level of Daily Serum Lactate within the first 3-day.

Outcome	All patients N=276	Normal-lactate n=91	Mild-lactate n=98	High-lactate n=87	P value
30-day mortality, n(%)	48 (17.4)	15 (16.5)	10 (10.9)	23 (26.4)	<0.001
GCS score at day-7	8.6 ± 3.7	8.3 ± 2.4	10.8 ± 3.8	6.6 ± 3.6	0.021
Length of ICU stay, d	16.9 ± 10.6	16.7 ± 8.6	14.2 ± 7.3	19.8 ± 9.1	0.015

Count variables shown with group percentage as n (%); continuous variables were expressed as mean ± SD.

Table 2: Clinical Outcomes in patients with Different Goals of Daily Serum Lactate Level over the first 3-day.

	HR	95% CI	P value
Decompressive craniectomy	0.866	0.236-2.300	<0.001
Serum Na ⁺ level	3.55	2.161-7.910	0.011
Serum Lactate	2.866	1.382-10.227	<0.001
APACHEII score	4.266	3.161-15.910	0.002
GCS score	4.34	2.019-12.981	0.01
Daily positive fluid balance	6.886	3.161-16.910	<0.001

Table 3: Multivariate Cox Hazard Regression Analysis of 30-day mortality.

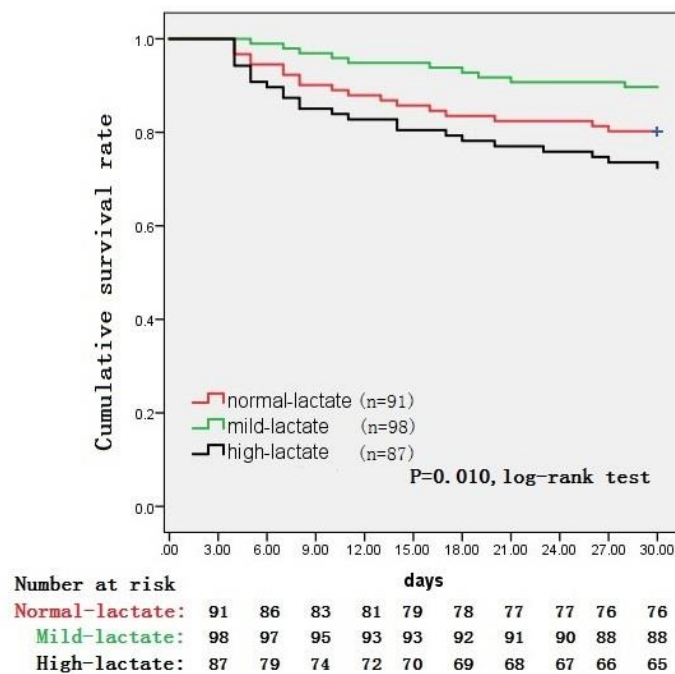


Figure 2: Kaplan-Meier survival curves comparing survival probability during 30 d following ICU admission among three groups of patients with acute intracranial hypertension induced by spontaneous intracerebral hemorrhage.

4. Discussion

Dehydrating therapy to relieve brain edema is one of crucial approaches to treat ICH after spontaneous cerebral hemorrhage [1]. Nevertheless, how much the dehydration should be? To date, little evidence in the way of laboratory values to the brain evident on CT scans that can be used to guide the optimal dehydration amount. We retrospectively analyzed data and found that permissive mild hyperlactatemia with a range of 2.0-3.5 mmol/l within the first 3-day after admission correlating with lower 30-day mortality, which could be a reference range to optimize fluid management for those acute intracranial hypertensive patients. Previous studies have established that serum lactate elevation was associated with inadequate tissue perfusion, particular the heart, liver and kidney [5, 8]. The correlation between elevated lactate at presentation and increased mortality has been known for decades and traditionally a threshold of 4 mmol/L has been used [9-11], other studies have showed that even modest increases in serum lactate with a threshold of 2.5 mmol/L are associated with poor outcome for septic patients [12, 13]. In the present study, we set a threshold of 3.5 mmol/L as remarkable high lactate and found that the 30-day mortality of those patients was significant higher than that in patients with serum lactate less than 3.5mmol/l, which is consistent with other findings [11].

As mentioned above, elevation of lactate reveals poor outcome and our cohort study indicated that lactate level and other factors, including serum Na⁺ level, APACHE II score, GCS score, and daily positive fluid balance were significant predictive factors for 30-day death. Surprisingly, our study showed that mild serum lactate elevation with a range of 2-3.5 mmol/L displayed better outcomes, including 30-day mortality, GCS score and the length of ICU stay when compared with the normal lactate patients within the first 3 days after admission. Why does mild elevated lactate reduce the mortality of

patients with ICH induced by spontaneous cerebral hemorrhage in the present study? Routinely, fluid infusion may be conducted when the serum lactate elevated [14], but it's not always right for the patients with brain damaged. Compared with normal brain, the course of the glycolytic pathway from glucose to lactate differs after injury, and the injured brain can utilize lactate as an energy substrate [15-17]. Moreover, the whole body doesn't exist hypovolemia in this condition. And brain edema could be more severe if large amount fluid infusing for the purpose of decreasing serum lactate level. That is, mild serum lactate elevation is beneficial for the patients receiving dehydrating therapy. Furthermore, Keri L.H.Carpenter [18] concluded that the concentration of lactate in the brain depends not only on lactate production, but also lactate consumption, which meant that serum lactate would transport to the injured brain. Interestingly, a recent study by Bouzat et al. [19] showed evidence for beneficial effects (judged by surrogate markers) resulting from intravenous lactate administration in 15 TBI patients. Thus, combined literature reports and our findings, maintaining mild lactate elevation in the patients with ICH with the first 3 days can be used to optimize fluid management in patients with ICH who accept dehydrating therapy.

There are, however, limitations, mainly inherent to the single-center retrospective study design with limited sample size. In addition, the serum lactate level may not optimal as it's not calculated by large sample. Moreover, these results only apply to intensive care units with a similar patient profile. A prospective design needed to strengthen the reliability of results.

5. Conclusions

For ICU patients with ICH induced by spontaneous cerebral hemorrhage who accept dehydrating treatment, we found an optimal range from 2-3.5mmol/L of serum

lactate with the first 3 days after admission. Less or more of this range was associated with an increased risk of 30-day mortality. This study shows that the data obtained from point-of-care arterial blood gas analyser, which are frequently and easily checked at the bedside, allow for the determination of short time, which can be preferable when monitoring acute responses to treatment changes. To further improve the validity of these results, an external validation in other centers including an expansion of sample size is suggested.

Funding

This study was supported by National Natural Science Foundation of China (Grant No. 81701875) and Science and Technology Program of Guangzhou, China (Grant No. 201904010039).

References

1. Morgenstern LB, Hemphill JC, Anderson C, et al. Guidelines for the management of spontaneous intracerebral hemorrhage: a guideline for healthcare professionals from the American Heart Association/American Stroke Association. *Stroke* 41 (2010): 2108-2129.
2. Claude Hemphill J, Lam A. Emergency Neurological Life Support: Intracerebral Hemorrhage. *Neurocrit Care* 27 (2017): 89-101.
3. Allen M. Lactate and acid base as a hemodynamic monitor and markers of cellular perfusion. *Pediatr Crit Care Med* 12 (2011): 43-49.
4. Ben-Yoseph O, Boxer PA, Ross BD. Assessment of the role of the glutathione and pentose phosphate pathways in the protection of primary cerebrocortical cultures from oxidative stress. *J Neurochem* 66 (1996): 2329-2337.
5. Garcia-Alvarez M, Marik P, Bellomo R. Sepsis-associated hyperlactatemia. *Crit Care* 18 (2014): 503.
6. Jess W Brallier, Pavan J Dalal, Patrick J McCormick, et al. Elevated intraoperative serum lactate during craniotomy is associated with new neurological deficit and longer length of stay. *J Neurosurg Anesthesiol* 29 (2017): 388-392.
7. Carpenter KLH, Jalloh I, Hutchinson PJ. Glycolysis and the significance of lactate in traumatic brain injury. *Front Neurosci* 9 (2015): 112.
8. Li S, Peng K, Liu F, et al. Changes in blood lactate levels after major elective abdominal surgery and the association with outcomes: a prospective observational study. *J Surg Res* 184 (2013): 1059-1069.
9. Shin TG, Jo JJ, Hwang SY, et al. Comprehensive interpretation of central venous oxygen saturation and blood lactate levels during resuscitation of patients with severe sepsis and septic shock in the emergency department. *Shock* 45 (2016): 4-9.
10. Moran JL, Santamaria J. Reconsidering lactate as a sepsis risk biomarker. *PLoS One* 12 (2017): e0185320.
11. Casserly B, Phillips GS, Schorr C, et al. Lactate measurements in sepsis-induced tissue hypoperfusion: results from the Surviving Sepsis Campaign database. *Crit Care Med* 43 (2015): 567-573.
12. Thomas-Rueddel DO, Poidinger B, Weiss M, et al. Hyperlactatemia is an independent predictor of mortality and denotes distinct subtypes of severe sepsis and septic shock. *J Crit Care* 30 (2015): 431-436.
13. Filho RR, Rocha LL, Correa TD, et al. Blood lactate levels cutoff and mortality prediction in

- sepsis-time for a reappraisal? A Retrospective Cohort Study. *Shock* 46 (2016): 480-485.
14. Bolvardi E, Malmir J, Reihani H, et al. The role of lactate clearance as a predictor of organ dysfunction and mortality in patients with severe sepsis. *Mater Sociomed* 28 (2016): 57-60.
 15. Newcombe VF, Williams GB, Outtrim JG, et al. Microstructural basis of contusion expansion in traumatic brain injury: insights from diffusion tensor imaging. *J Cereb Blood Flow Metab* 33 (2013): 855-862.
 16. Patel AB, Lai JC, Chowdhury GM, et al. Direct evidence for activity-dependent glucose phosphorylation in neurons with implications for the astrocyte-to-neuron lactate shuttle. *Proc Natl Acad Sci USA* 111 (2014): 5385-5390.
 17. TeSlaa T, Teitell MA. Techniques to monitor glycolysis. *Methods Enzymol* 542 (2014): 91-114.
 18. Keri LH, Carpenter, Ibrahim Jalloh, Peter J Hutchinson. Glycolysis and the significance of lactate in traumatic brain injury. *Front Neurosci* 9 (2015): 112.
 19. Bouzat P, Sala N, Suys T, et al. Cerebral metabolic effects of exogenous lactate supplementation on the injured human brain. *Intensive Care Med* 40 (2014): 412-421.



This article is an open access article distributed under the terms and conditions of the [Creative Commons Attribution \(CC-BY\) license 4.0](https://creativecommons.org/licenses/by/4.0/)